

SIS

Valves

Hygienic Sanitary Pipe Valves & Fittings



Specification Catalog

Over the years, SIS Valves has been recognized as a supplier of high-quality products. Later on in year 2014, focusing on the prime quality of products we started our own manufacturing facility in India, with specialized techniques and automated machines we are able to provide best in class Valves & Fittings in the country itself, Keeping in mind timely delivery to our customers with prominent prime quality. Our mission: To optimize the performance of our customers' processes. This means that we are a customer-focused company that provides products and solutions that help our customers become more productive and competitive. We define the challenges faced by our customers and offer them solutions that respond to their true needs.

With Quality Pipes Valves and Fittings enhance your plant with Expertise Safety and Hygiene.



We Manufacture with Best Techniques & Standards

- Automated CNC Machines
- Electro Polishing Machine
- Hydro Testing Machine
- Bright Annealing Machine
- Dedicated Testing Equipment
- Corrosion Test
- Flaring Test
- Flattening Test
- Flange Test
- Hydrostatic / Pneumatic Pressure Test

PHARMACEUTICALS



From a decade SIS Valves is fulfilling the needs of well-known industries across India & outside India as a leading brand in stainless-steel High-quality equipment Manufacturer & Supplier. SIS Valves focuses on premium quality & reliability for better industrial solutions and processing of products. As we stand on our hygienic and certified equipment's we aim to supply and fulfill the day to day needs of Industrial plants & manufacturing units in the Milk, Food, Beverages and Pharmaceuticals sector.



FOOD | DAIRY | BEVERAGE

Condenser & Heater Tubes

SIS manufacturers specialty welded tubing for heat transfer applications like condenser, feedwater heater, LP heater and HP heater etc. on its state-of-the-art, PLC run tube mills. All operations like forming, seam welding, bead rolling, sizing, OD seam polishing, bright annealing, straightening, NDT checking, dimension control, continuous marking and cut-off are done online and automatically. These fully integrated and perfectly synchronized processes result in a very high and consistently good quality of products. Whether it is the surface finish, dimensional accuracy or the welding integrity, the tubes made on these mills meet the highest quality standards. The customers are able to rely on these products for their critical usages with complete peace of mind.



TYPE	OD Heat Exchanger/ Condenser Tubes Straight or U-Bent
OD	5/8" to 2" (15.88 to 50.8mm)
WALL THICKNESS	0.5 to 4.0mm
LENGTH	Upto 30 mtrs; U tubes as per customers' requirements
SPECIFICATION ETC.	ASTM A249, A269, DIN 17455 & 17457
WELDING METHOD	TIG, Laser Welding used
OTHER	In Bright Annealed condition. Finish BA; Polishing done on request.

Welded Pipes & Tubes

SIS is a specialist in manufacturing welded pipes & tubes. With its enviable manufacturing infrastructure, vast experience and depth in understanding of the subject, its capabilities match with the best in business, globally. Equipments like fully integrated and automatic tube mills (with online annealing, eddy current testing, marking etc.), semi automatic tube mills, solution annealing furnaces, cold-drawing facilities, multiple support machines like straightening, cutting, ends facing, polishing, high capacity pickling & passivation setup, U-bending facility etc. give SIS a consummate versatility that is unparalleled.



TYPE	OD	WALL THICKNESS	LENGTH	SPECIFICATION ETC.	WELDING METHOD
Pipes	¼" NB to 24" NB (13.70 to 609.6mm)	Sch 5s, 10s, 20, 40s	4.5 To 6.1mtrs Standard; Customers' Specific Requirements Can Also Be Met.	ASTM A312, A778	Tig, Plasma Welding Used. Circumferential Welding May Be Used For Double Random Lengths (10 To 12 Mtrs)
Heat Exchanger/ Condenser Tubes- Straight or U-Bent	5/8" to 2" (15.88 to 50.8mm)	0.5 to 4.0mm	Upto 30 Mtrs; U Tubes As Per Customers' Requirements	ASTM A249, A269, DIN 17455 & 17457	Tig, Laser Welding Used
Small Diameter/ Instrumentation/ Heating Element Tubing - Straight or Coiled	5/16" to 5/8" (8 to 16mm)	0.5 to 2.11mm	Upto 30 Mtrs; In Coiled Form 400 Mtr Lengths Possible	ASTM A269	Tig, Laser Welding Used
Automotive Tubes	12 to 51mm	0.5 to 2.11mm	As Per Customers' Requirements	Customer requirements	Tig, Laser Welding Used
Sanitary Tubes for Dairy & Pharma	½" to 4" (12.7 to 101.6mm)	0.5 to 3.0mm	4 to 6 mtrs	ASTM A270, DIN 11850	Tig, Laser Welding Used
Sugar Industry Tubes	1-3/8" to 4" (35 to 101.6mm)	1.0 to 2.11mm	Upto 15 mtrs.	ASTM A249, A269, EN 10217-7	Tig Welding Used

EFW (Electric Fusion Welded) Pipes

A combination of specially designed equipments like 1600MT press brake machine, multiple rolls bending machine, welding installations for outside, inside and circumferential welding, size calibrating press, solution annealing furnace and a host of other related machinery, is employed to manufacture pipes used in critical applications like refineries, fertilizers, LNG terminals, cross country pipe lines etc.



TYPE	OD	WALL THICKNESS	LENGTH	SPECIFICATION ETC.	WELDING METHOD
Pipe with one Longitudinal Seam	8" NB to 24" NB (219.1 to 609.6mm)	2.5 to 32mm	6mtrs maximum; Double random lengths are possible with one circumferential joint.	ASTM A358, A409, A778,	TIG, Plasma, SAW welding used in isolation or any combination thereof.
Pipe with Circumferential Welding Joints	18" to 48" (457.2 to 1220mm)	2.5 to 14.0mm	3.5 to 6 mtrs	ASTM A358, A409, A778,	TIG, Plasma, GTAW welding used in isolation or any combination thereof

These products can be supplied in the following grades:

Austenitic Grades:	TP304, 304L, 316, 316L, 316Ti, 317L, 321, 321H, 347, 347H.
Ferritic Grades:	TP409
Duplex:	UNS 31803, UNS 32205, UNS 32304, LDX2101

Edges of the Stainless Steel Plate cut to size are prepared and pre-bent followed by roll forming into pipes. It is pre welded and then the final welding is done using filler material. All welders, welding operators and weld procedures are qualified to the ASME Boiler and Pressure Vessel Code, Section-IX. Heat treatment is done on continuous roller hearth furnace or batch furnace. The pipe is now sized, pickled &

SEAMLESS PIPES & TUBES

With specialised machinery like cold pilgering machines, draw benches, solution annealing furnace and U-bending facility, SIS offer the best quality seamless tubes and pipes.



TYPE	OD	WALL THICKNESS	LENGTH	SPECIFICATION ETC.
Pipes	1/4" NB to 8" NB (13.70 to 219.1mm)	Sch 5s, 10s, 20, 40s	4.5 to 6.1 mtrs standard	ASTM A312
Heat Exchanger/ Condenser Tubes - Straight or U-Bent	5/8" to 2" (15.88 to 50.8mm)	Sch 5s, 10s, 20, 40s	Upto 15mtrs; U tubes as per customers' requirements	ASTM A213, A269, DIN 17456, 17458
Small Diameter/ Instrumentation/ Heating Element Tubing	5/16" to 5/8" (8 to 16mm)	1.0 to 2.11mm	Upto 15 mtrs	ASTM A213, A269, DIN 17456, 17458

Mother tubes or hollows are procured from reputed manufacturers in India and abroad, and are subjected to a thorough chemical analysis with rigorous physical and mechanical tests.

The best quality mother tubes are then cold-rolled on pilger machines and/or cold-drawn on draw benches with precise pull forces, achieving the desired dimensions and a smooth finish. Tubes are then solution annealed, straightened, pickled, passivated before they are inspected, tested and released for dispatch. Polishing is also done wherever required by a customer.

Austenitic Grades:	TP304, 304L, 316L, 321, 347, 347H
Duplex:	UNS 31803, UNS 32205, UNS 32304, LDX2101

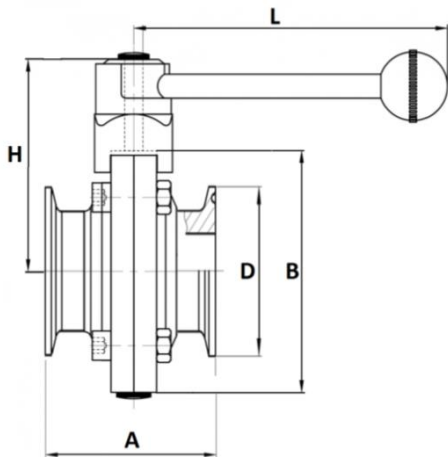
Butterfly Valve

SIS Butterfly Valve SMS range comes in SS304L & SS316L
 Has a working pressure of 0.9 to 10 bar,
 With working temperature up to 150 Celsius.
 Suitable for Pharmaceutical, Dairy, Beverages
 and Food Industry applications.

Standard: ASME BPE
 Type: SMS
 Finish: Electro Polished
 Material: AISI 304L / 316L
 Seat: Silicon / Viton / EPDM
 End Connection: Tri Clover / Welded / Union

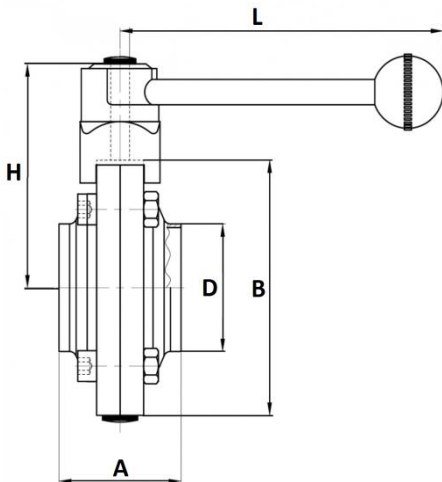


TRI CLOVER END



CODE	SIZE	A	B	D	L	D
1001	25.4	66	78	25.4	130	82
1002	31.7	70	86	31.7	130	86
1002	38.1	74	90	38.1	130	90
1003	50.8	76	106	50.8	140	98
1004	63.5	84	124	63.5	150	108
1005	76.2	90	138	76.2	170	116
1006	101.4	108	159	101.4	170	126

WELDED END



CODE	SIZE	A	B	D	L	D
1010	25.4	66	78	25.4	130	82
1011	31.7	66	78	31.7	130	82
1012	38.1	70	86	38.1	130	86
1013	50.8	76	102	50.8	140	96
1014	63.5	98	115	63.5	150	103
1015	76.2	100	128	76.2	170	110
1016	101.4	106	154	101.4	170	122

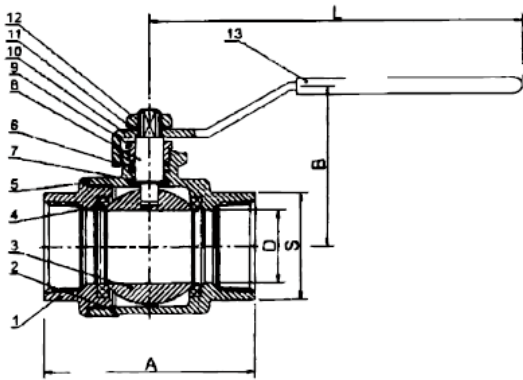
Ball Valve

SIS Ball Valve range comes in SS304L & SS316L
 Has a working pressure of 0.9 to 10 bar,
 With working temperature up to 150 Celsius.
 Suitable for Pharmaceutical, Dairy, Beverages
 and Food Industry applications.

Standard: ASME BPE
 Finish: Electro Polished
 Material: AISI 304L / 316L
 Seat: Silicon / Viton / EPDM
 End Connection: Tri Clover / Welded



TRI CLOVER END



CODE	SIZE	A	B	D	E	F
2015	25.4	100	50.5	25.4	50	110
2016	31.7	120	50.5	31.7	55	120
2017	38.1	130	50.5	38.1	58	160
2018	50.8	150	50.5	50.8	60	140
2019	63.5	200	64	63.5	80	170
2020	76.2	210	77.5	76.2	90	190
2021	101.4	220	91	101.4	118	240

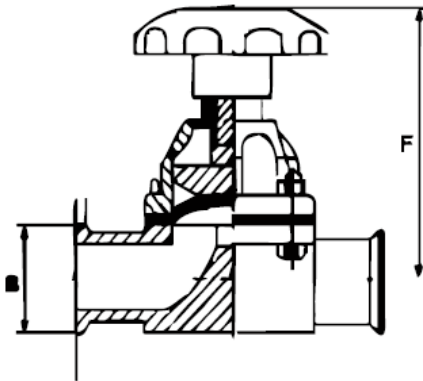
Diaphragm Valve

SIS diaphragm valve comes in SS304L & SS316L
 Has a working pressure of 0.9 to 10 bar,
 With working temperature up to 150 Celsius.
 Suitable for Pharmaceutical, Dairy, Beverages
 and Food Industry applications.

Standard: ASME BPE
 Finish: Electro Polished
 Material: AISI 304L / 316L
 Seat: Silicon / Viton / EPDM
 End Connection: Tri Clover / Welded



TRI CLOVER END



CODE	SIZE	A	B	D	E
2001	3/4s	125	43.5	50.5	16.1
2002	1s	125	43.5	50.5	22.4
2002	1.25s	145	43.5	50.5	28.8
2003	1.5s	160	43.5	50.5	35.1
2004	1.3/4s	180	50.5	64	42
2005	2s	190	50.5	64	47.8
2006	2.1/4s	210	70.5	77.5	53
2007	2.5s	235	70.5	77.5	59.5

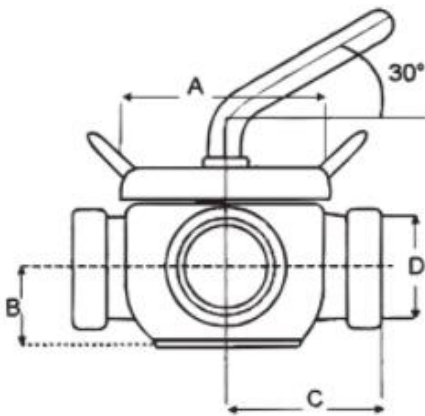
Plug Valve

SIS Three Way Plug Valve comes in SS304L & SS316L
 Has a working pressure of 0.9 to 10 bar,
 With working temperature Up to 150 Celsius.
 Suitable for Pharmaceutical, Dairy, Beverages
 and Food Industry applications.

Standard: ASME BPE
 Type: SMS
 Finish: Electro Polished
 Material: AISI 304L / 316L
 Seat: Silicon / Viton / EPDM
 End Connection: Tri Clover / Welded / Union

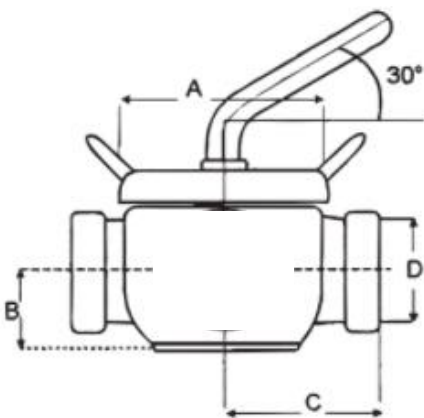


THREE WAY



CODE	SIZE	A	B	D	C
1020	25.4	57	12	25.4	55
1022	38.1	77	19	38.1	70
1023	50.8	108	25	50.8	82
1024	63.5	120	31	63.5	105
1025	76.2	150	38	76.2	110
1026	101.4	165	51	101.4	125

TWO WAY



CODE	SIZE	A	B	D	C
1030	25.4	57	12	25.4	55
1032	38.1	77	19	38.1	70
1033	50.8	108	25	50.8	82
1034	63.5	120	31	63.5	105
1035	76.2	150	38	76.2	110
1036	101.4	165	51	101.4	125

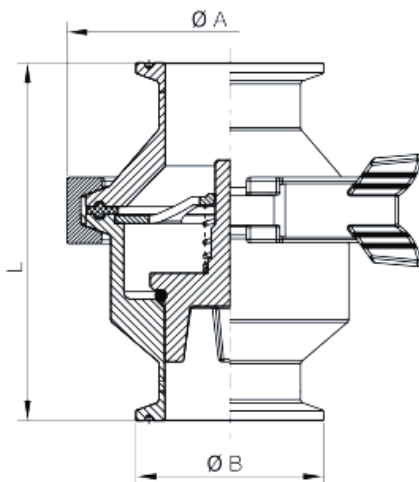
Check Valve

SIS Check Valve comes in SS304L & SS316L
Has a working pressure of 0.9 to 10 bar,
With working temperature Up to 150 Celsius.
Suitable for Pharmaceutical, Dairy, Beverages
and Food Industry applications.

Standard: ASME BPE
Type: SMS
Finish: Electro Polished
Material: AISI 304L / 316L
Seat: Silicon / Viton / EPDM
End Connection: Tri Clover / Welded



Check Valve



CODE	SIZE	L	A	B
1040	25.4	62	41	25.4
1041	38.1	75	47	38.1
1042	50.8	87	54	50.8
1043	63.5	95	69	63.5
1044	76.2	115	74	76.2
1045	101.4	155	82	101.4

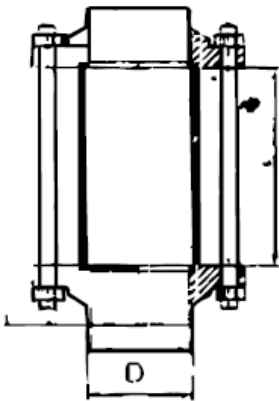
View Glass

SIS View Glass comes in SS304L & SS316L
Has a working pressure of 0.9 to 10 bar,
With working temperature Up to 150 Celsius.
Suitable for Pharmaceutical, Dairy, Beverages
and Food Industry applications.

Standard: ASME BPE
Finish: Electro Polished
Material: AISI 304L / 316L
Seat: Silicon / Viton / EPDM
End Connection: Tri Clover / Welded



View Glass

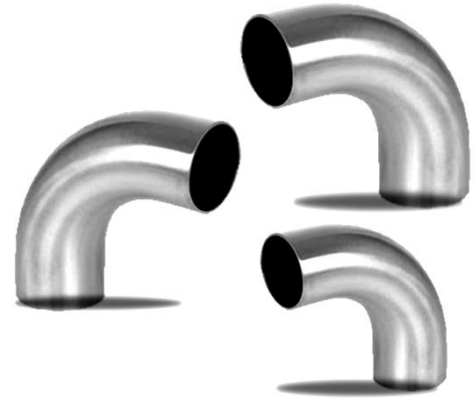


CODE	SIZE	L	A	B
1140	15	19	100	150
1141	20	25	100	150
1142	25	32	100	150
1143	32	38	100	150
1144	40	45	100	150
1145	50	57	100	155
1146	65	76	100	155
1147	80	89	100	160
1148	100	105	100	160
1149	125	129	100	170
1150	150	154	100	170

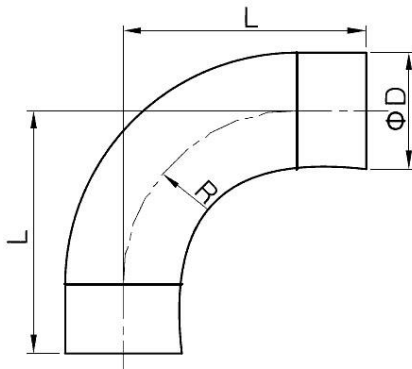
Bend

SIS hygienic sanitary fittings range comes in SS304L & SS316L
 Has a working pressure of 0.9 to 10 bar,
 With working temperature Up to 150 Celsius.
 Suitable for Pharmaceutical, Dairy, Beverages
 and Food Industry applications.

Standard: ASME BPE
 Type: SMS
 Finish: Electro Polished
 Material: AISI 304L / 316L
 End Connection: Tri Clover / Welded

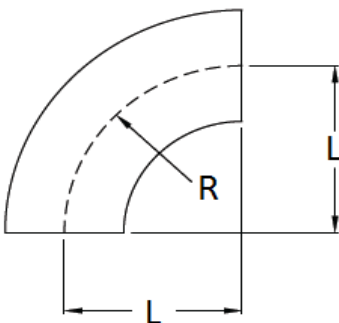


LONG BEND



CODE	SIZE	R	L	D	THICK
1060	25.4	1.5	37.5	25.4	1.5-2MM
1061	38.1	1.5	57.0	38.1	1.5-2MM
1062	50.8	1.5	76.5	50.8	1.5-2MM
1063	63.5	1.5	95.2	63.5	1.5-2MM
1064	76.2	1.5	114.1	76.2	1.5-2MM
1065	101.4	1.5	152.1	101.4	1.5-2MM

SHORT BEND



CODE	SIZE	R	L	D	THICK
1060	25.4	15	17.5	25.4	1.5-2MM
1061	38.1	1.5	37.0	38.1	1.5-2MM
1062	50.8	1.5	56.5	50.8	1.5-2MM
1063	63.5	1.5	75.2	63.5	1.5-2MM
1064	76.2	1.5	104.1	76.2	1.5-2MM
1065	101.4	1.5	132.1	101.4	1.5-2MM

Tee

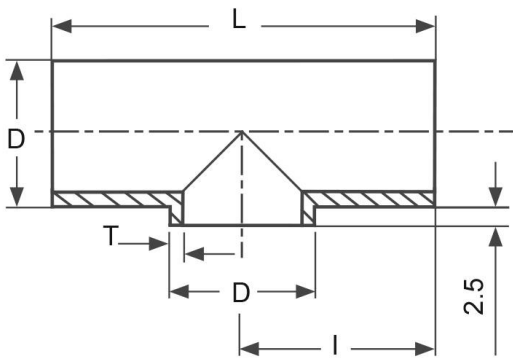
SIS hygienic Dairy Sanitary Fittings range comes in SS304L & SS316L

Has a working pressure of 0.9 to 10 bar,
With working temperature Up to 150 Celsius.
Suitable for Pharmaceutical, Dairy, Beverages
And Food Industry applications.

Standard: ASME BPE
Type: SMS
Finish: Electro Polished
Material: AISI 304L / 316L
End Connection: Tri Clover / Welded



Tee



CODE	SIZE	L	I	D
1050	25.4	110	55	25.4
1051	38.1	140	70	38.1
1052	50.8	164	82	50.8
1053	63.5	210	105	63.5
1054	76.2	220	110	76.2
1055	101.4	300	150	101.4

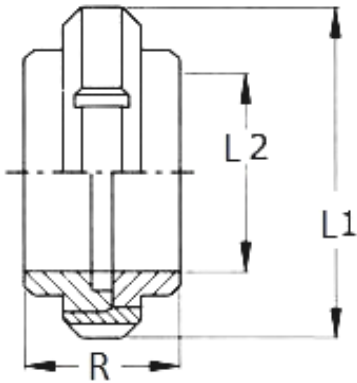
UNION

SIS hygienic sanitary fittings range comes in SS304L & SS316L
 Has a working pressure of 0.9 to 10 bar,
 With working temperature Up to 150 Celsius.
 Suitable for Pharmaceutical, Dairy, Beverages
 and Food Industry applications.

Standard: ASME BPE
 Type: SMS
 Finish: Electro Polished
 Material: AISI 304L / 316L
 End Connection: Tri Clover / Welded

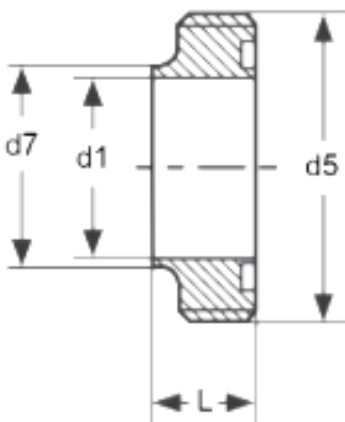


UNION



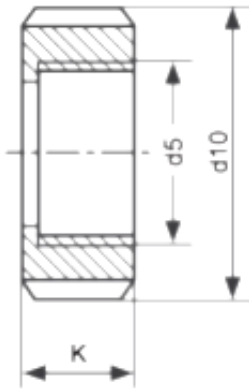
CODE	SIZE	L1	R	L2
1060	25.4	51	24	25.4
1061	38.1	72	31	38.1
1062	50.8	82	31	50.8
1063	63.5	97	35	63.5
1064	76.2	111	36	76.2
1065	101.4	146	49	101.4

MALE PART



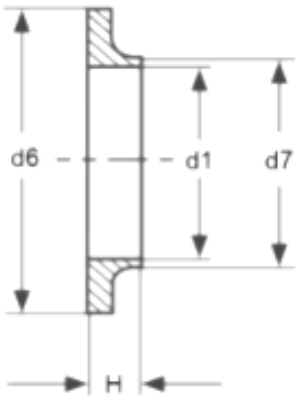
CODE	SIZE	L	D1	D7
1070	25.4	15	22.6	25.4
1071	38.1	20	35.6	38.1
1072	50.8	20	48.6	50.8
1073	63.5	24	60.3	63.5
1074	76.2	24	72.9	76.2
1075	101.4	35	97.6	101.4

NUT



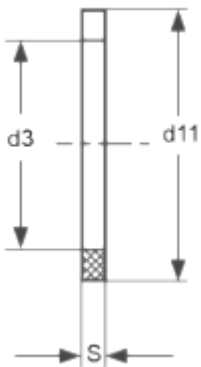
CODE	SIZE	K	D10	D5
1080	25.4	20	51	40X1/6"
1081	38.1	25	74	60X1/6"
1082	50.8	26	84	70X1/6"
1083	63.5	30	100	85X1/6"
1084	76.2	32	114	98X1/6"
1085	101.4	50	150	132X1/6"

LINER



CODE	SIZE	H	D1	D7	D6
1090	25.4	7.5	22.6	25.4	35.5
1091	38.1	9	35.6	38.1	55
1092	50.8	9	48.6	50.8	65
1093	63.5	9	60.3	63.5	80
1094	76.2	10	72.9	76.2	93
1095	101.4	12	97.6	101.4	127

GASKET



CODE	SIZE	S	D11	D7
1090	25.4	4	32	25.4
1091	38.1	4	48	38.1
1092	50.8	4	61	50.8
1093	63.5	4	73.5	63.5
1094	76.2	4	86	76.2
1095	101.4	4	114	101.4

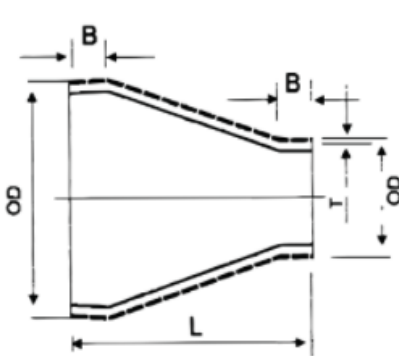
Reducer

SIS hygienic sanitary fittings range comes in SS304L & SS316L
 Has a working pressure of 0.9 to 10 bar,
 With working temperature Up to 150 Celsius.
 Suitable for Pharmaceutical, Dairy, Beverages
 and Food Industry applications.

Standard: ASME BPE
 Type: SMS
 Finish: Electro Polished
 Material: AISI 304L / 316L
 End Connection: Tri Clover / Welded



CONCENTRIC TYPE



CODE	SIZE	T	B1	D	B
1111	3/4"	1/2"	28.58	25.4	25.4
1112	1"	1/2"	28.58	25.4	25.4
1113	1"	3/4"	28.58	25.4	25.4
1114	1-1/2"	3/4"	28.58	25.4	25.4
1115	1-1/2"	1"	28.58	25.4	25.4
1116	2"	1"	28.58	25.4	25.4
1117	2"	1-1/2"	28.58	25.4	25.4
1118	2-1/2"	1-1/2"	28.58	25.4	25.4
1119	2-1/2"	2"	28.58	25.4	25.4
1120	3"	1-1/2"	28.58	25.4	38.1

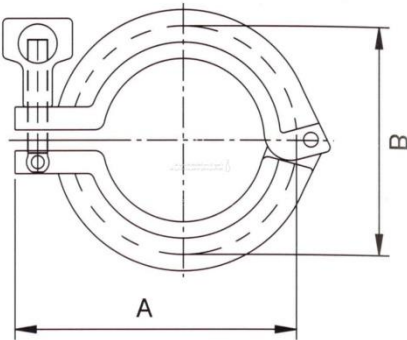
Tri Clover Clamp

SIS hygienic sanitary fittings range comes in SS304L & SS316L
 Has a working pressure of 0.9 to 10 bar,
 With working temperature Up to 150 Celsius.
 Suitable for Pharmaceutical, Dairy, Beverages
 and Food Industry applications.

Standard: ASME BPE
 Type: SMS
 Finish: Electro Polished
 Material: AISI 304L / 316L
 End Connection: Tri Clover



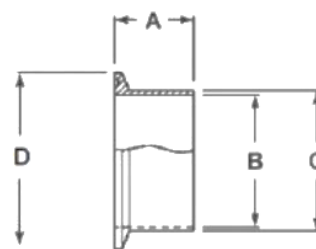
CONCENTRIC TYPE



CODE	SIZE	A	B	IN
3111	20-25-38	90	58	3/4"-1"
3112	50	99	72	2"
3113	65	126	99	2 1/2"
3114	80	135	115	3"
3114	100	154	127	4"

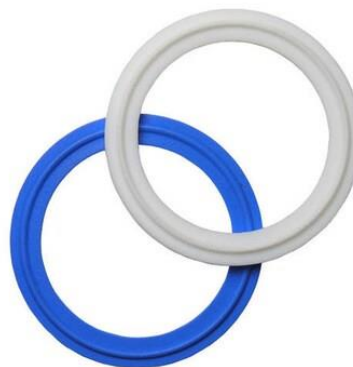
Tri Clover Ferrule

CODE	SIZE	A	B	D
3131	20-25-38	25.2	25.4	50.5
3132	50	50.2	50.8	65
3133	65	21.5	63.5	78
3134	80	21.5	76.1	91
3134	100	21.5	101.2	119



Tri Clover Gasket

CODE	SIZE	A	B	D
3121	20-25-38	21.5	25.4	50.5
3122	50	21.5	50.8	65
3123	65	21.5	63.5	78
3124	80	21.5	76.1	91
3124	100	21.5	101.2	119





Hygienic Sanitary Valves & Fittings

Standard Industrial Store

1/9B, Jindal House, Asaf Ali Road
New Delhi – 110002
India

standardindustrialstore09@gmail.com
www.sis-en.com

Works

E-532 A RIICO Industrial Area,
Chopanki, Bhiwadi Alwar
Rajasthan – 301019
India